

November 14, 2006

Schematic Design Presentation

Sixth Avenue Transportation Facility

For Mansfield Independent School District

Table of Contents

<i>Acknowledgements</i>	3
<i>Project Narrative</i>	4
<i>Site Plan</i>	5
<i>Floor Plan – Driver’s Building 1</i>	6
<i>Floor Plan – Office Building 2</i>	7
<i>Floor Plan – Storage Building 3</i>	8
<i>Schedule</i>	9

Administration

Vernon Newsom, Superintendent

Dan Phillips, Board President

Gale Moericke, Board Vice President

Sandra Vathauer, Board Secretary

Terry Moore, Board Trustee

Beth Light, Board Trustee

Joy Keller, Board Trustee

Mike Leason, Board Trustee

Lou Spiegel, Associate Superintendent Business

John Perdue, Director of Facilities & Operations

Charles Stone, Director of Transportation

Project Design Team

Huckabee

ARCHITECTURE ENGINEERING MANAGEMENT

4521 S. Hulen, Suite 220

Fort Worth, TX 76109

817-377-2969

MEP

Romine Romine & Burgess

300 Greenleaf Street

Fort Worth, TX 76107

817-336-4633

Structural Engineering

Kyle B. Burgy, P.E. - Huckabee

Construction Program Supervision

John Schmitt, Huckabee

Cameron Thompson, Huckabee

LaVerne Bramson, Huckabee

Civil Engineering & Landscaping

Cunningham Allen

3103 BeeCave Road, Suite 202

512-327-2946

Technology

Allen Lawrence, RCDD-Huckabee

John McCain, RCDD-Huckabee

Acknowledgements

To accommodate bus rider exchanges, unscheduled restroom needs and provisions for additional bus parking storage, a remote Transportation Satellite Facility is proposed to be located on 8.9 acres of MISD property located on Sixth Avenue and Airport Road in Mansfield.

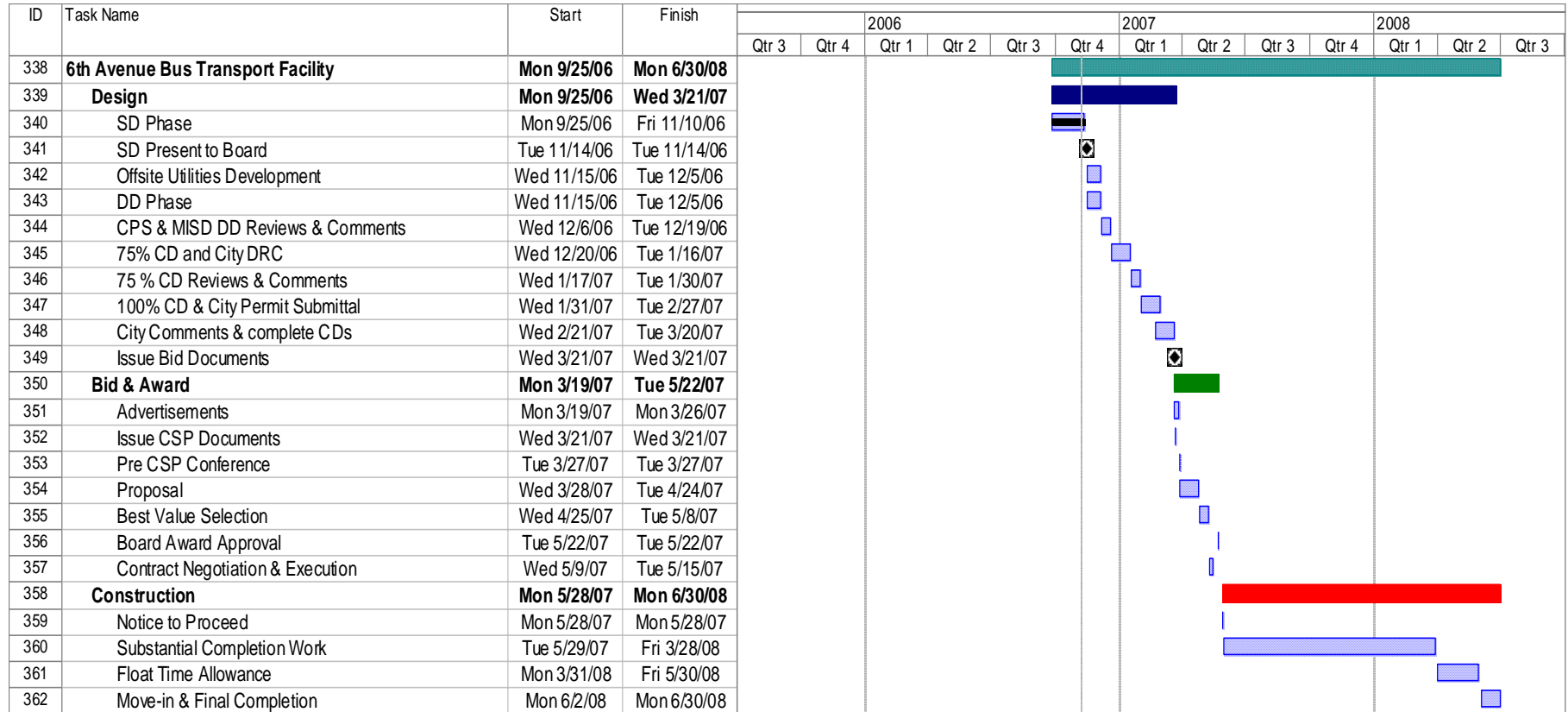
The facility will be provided with a security fence and approximately 134,000 square feet of paved area to park 61 buses and 67 vehicle parking spaces for drivers. Two existing portable buildings would be relocated to this site. One storage building and one fueling station with two pumps and car reader access and metering would be provided.

The District forecast within the planning period to about 2013 is for 160 buses. The existing Operations Complex can accommodate a maximum of 128 operational buses plus provide parking for ten buses needing repairs. The proposed bus and vehicle parking is based on the forecast southern portion of the District's transportation operational needs in order to reduce bus mileage, operational costs and better utilize the District's transportation resources.

Site Plan Removed;
Please Call District to Request a Copy

Floor Plan Removed;
Please Call District to Request a Copy

Floor Plan Removed;
Please Call District to Request a Copy



Schedule